

SMOOTHSLIDERS

WARDROBE SLIDING DOORS

50 kg
PER DOOR



SLIDING TRACK DESIGNED FOR MIRROR, MELAMINE & MDF

A sliding track system designed for mirror, melamine and mdf panel doors in 2, 3 or 4-door applications.

The extruded aluminium mirror door frame includes horizontal rail trims and vertical handle trims with finger grip. It also features rubber bumper inserts for anti-collision and protection for the vertical frame and jamb.

All visible extrusions are pre-finished in a durable powdercoat Dulux Arctic White or Natural Anodised.

MEASURE

Getting the correct measurements is critical to ensuring that the doors you order fit into your customers space. We always work from Jamb to Jamb width, and from the floor to underside of jamb height.

QUOTE

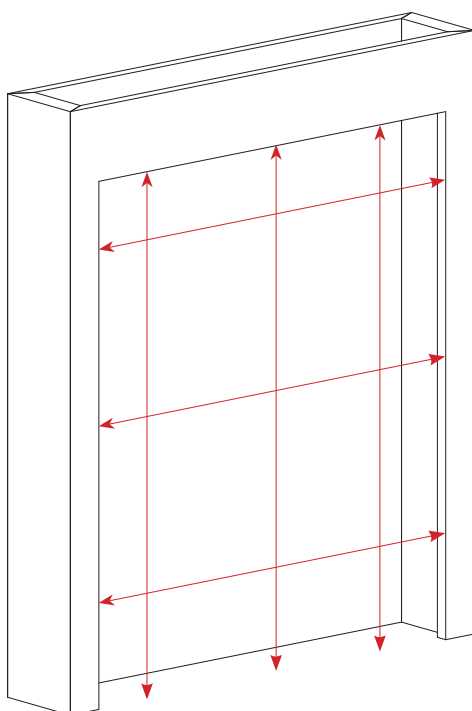
Need a quote? No worries!
You can quote online through our online portal or you can email your requirements through to sales@opendoors.co.nz

ORDER

Got everything confirmed and ready to place an order? You can either order online through our customer portal, or you can email your order along with a copy of your purchase order to sales@opendoors.co.nz

DELIVER

We can deliver our Smoothslide Wardrobe doors almost anywhere in New Zealand!



WHERE TO MEASURE

Jamb to Jamb Width

When measuring we recommend using a laser measure as this will give you a much more accurate reading than a traditional tape measure.

3 Measurements will give you the best results. Do a measurement from the top, the middle and the bottom of your opening. Take note of the widest width.

Floor to Underside of Jamb

If you have pre-existing carpet, you will need to cut where the bottom track will be installed and take your measurement from the floor to the underside of the head jamb.

If your jambs have not yet been installed, this will need to be subtracted from your final measurement.

Again, 3 measurements will give you the best results. Measure the left drop, the center drop and the right drop. Take note of the smallest drop.

SMOOTHSLIDERS

WARDROBE SLIDING DOORS

50 kg
PER DOOR

Carpeted Floors

When installing around a carpeted floor, for best results a packer should be installed directly to the flooring beneath your carpet. This will allow your bottom track to sit flush* with your carpet, giving you a nice clean finish. In most cases, a 9mm packer is used, and can also be provided with your order at no additional cost.

Once the bottom track has been installed, a qualified carpet layer will be required to finish your carpet to the edges of the bottom track

Midrails

Midrails are only required when working with mirror doors. Any mirror that measures at over 2 square meters must have a midrail as per the New Zealand Human Impact Standards. Placement of the midrail can be changed as long as the mirror panel measures less than 2 square meters. If unsure, feel free to give us a call. Midrails can also be used with Melamine or MDF Panels to create different design options.

FAQ 's

What are your Aluminium Extrusion

Colours?

Our two stocked colours are Arctic White and Natural Anodised (Silver). We are also able to Powdercoat to any colour from the Dulux Powder Coating colour range. Powder coating is an additional charge.

Do I require any additional hardware?

Our doors come with the bottom rollers and top guides pre-fixed to the doors making the installation process quick and easy. The extrusion also acts as the door handle, so no additional hardware is required.

What door types can I choose from?

We offer 3 types of doors; Melamine, Mirror and MDF.

You can choose to have these in any configuration you would like.

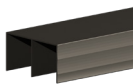
For example: 1x Mirror Door and 1x MDF Door

What Panel Colours can I choose from?

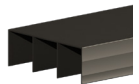
For Melamine panels our standard colour is Arctic White Embossed. Check out the Laminex and Bestwoods colour range. Colour board options are all P.O.A.



SMOOTHSLIDE COMPONENTS & REPLACEMENT PARTS



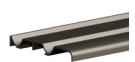
M924:
84mm Double Headguide Channel
White or Natural Anodised



M926:
124mm Triple Headguide Channel
White or Natural Anodised



TT591:
Snap Lock - Per Meter



M923:
84mm Double Bottom Track
White or Natural Anodised



M925:
124mm Triple Bottom Track
White or Natural Anodised



TT905:
Wheel assembly



CPM141:
Nylon Door Guide

Pro Installation Tip:

When fastening the snap lock to the floor (or Packer) - For the best results, we recommend using liquid nails. Screwing into the snap lock may result in the strip warping causing it not to lock into place as expected.